



**Traveling Aggies**

A PROGRAM OF  
The Association of Former Students



# Columbia and Snake Rivers: Food, Wine and History

April 3-8, 2026

*Aboard National Geographic Sea Lion*



**SPECIAL AFFINITY GROUP SAVINGS OFFER**





## Howdy, Ags!

We invite you to cruise the mighty Columbia and Snake Rivers, taking in the scenery and splendor of this storied region. Aboard the *National Geographic Sea Lion*, you'll journey into history, following in the wake of Lewis and Clark to discover a diverse and bountiful region cultivated over thousands of years by its Indigenous people. See time layered in the riverbanks where the Missoula Floods of 15,000 years ago carved much of the route, and the landslides of 500 years ago altered the river's course by a full mile—events the expedition's geology expert will explain. In fact, the full expedition team will put everything into context, weaving an ongoing narrative from each day's events.

This fertile region is bursting with flavors from the orchards and farmlands along the route, and the ship is primarily stocked with provisions from local markets, vineyards and breweries. Taste more than 30 of the region's best wines, sampling bottles personally selected by *Food & Wine* magazine's Executive Wine Editor, Ray Isle. Learn about the region's unique terroirs from an onboard wine expert and during private tours and tastings with local winemakers.

### FOOD&WINE

In 2026, this itinerary is part of an exclusive wine collaboration with **Food & Wine** magazine. See page 6 for details.

This six-day expedition includes a range of immersive activities like kayaking, hiking and visits to fascinating museums and historic sites—excursions designed to give you an up-close perspective on the Pacific Northwest.

I hope you will be able to join us April 3-8, 2026. **To make your reservation, please return the enclosed reservation form, email [groups@expeditions.com](mailto:groups@expeditions.com) or call 833-985-1261.**

Gig em!



Julie Scamardo  
Manager of Traveling Aggies  
The Association of Former Students

### Special Offer

Save 5% when traveling with the Traveling Aggies. See page 12 for details.

Cover: Multnomah falls.

Opposite page: Taking in the view of stunning basalt cliffs along the journey.



# EPIC SCENERY AND HISTORY AROUND EVERY BEND

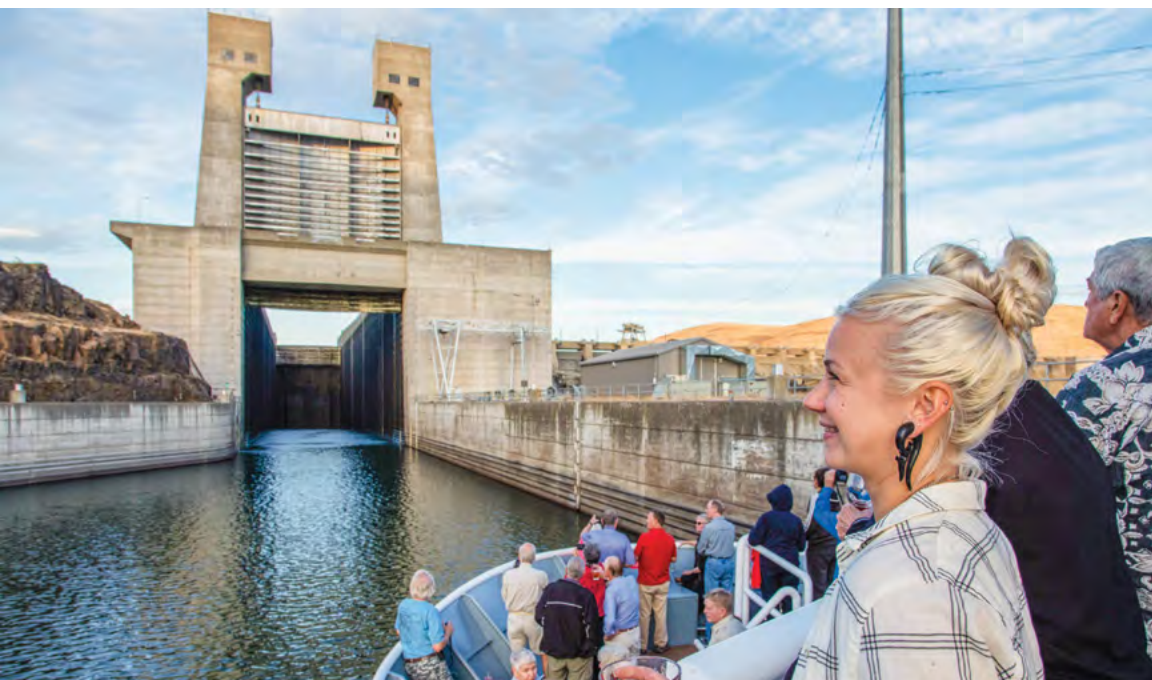
## **Discover a Spectacular Landscape Carved Over Eons**

The powerful Columbia and Snake Rivers flow through some of the world's most geologically fascinating landscapes, carved over time by tumultuous floods and volcanic eruptions. Today, you are able to appreciate their beauty aboard a 31-cabin expedition ship, employing Zodiacs and kayaks to explore wild reaches up close. Discover cascading waterfalls, massive canyons, rolling hills and towering basalt cliffs and columns. Around every bend of the Columbia and Snake Rivers, the region's unique natural history reveals itself in all its glory. These rivers also offer up another exhilarating marvel as you travel through a series of eight locks that lift or lower the ship some 700 feet—nearly ten times the elevation change of the Panama Canal.

## **Unraveling the Past Along Storied Waters**

The Columbia and Snake Rivers wind through lands steeped in human history, where stories stretch back thousands of years—from the enduring legacy of the Nez Perce to the modern engineering marvels of the rivers' locks. At the Columbia Gorge Museum, journey through 15,000 years of heritage while viewing native artwork alongside industrial artifacts. In Walla Walla, visit the historic Whitman Mission, then set out on a guided art or wine walk through the town's charming downtown. Throughout your voyage, experts in history, geology and viticulture illuminate the connections between these remarkable landscapes and the people who have shaped them—and been shaped by them—across millennia.

*Opposite page (clockwise from top): Terraced cliffs along the Palouse River; guest exploring the Whitman Mission National Historic Site; marveling at the 200-foot Palouse Falls; approaching Ice Harbor Lock and Dam in the evening.*







# THE ULTIMATE EXPEDITION EXPERIENCE

## Your Platform for Discovery

An expedition ship is the ideal way to explore the Pacific Northwest. Traveling expedition-style allows you to experience the region with all your senses—seeing its grand beauty, hearing its waterfalls and wild silences, feeling its fresh air and tasting it daily in the delectable, locally sourced food served aboard. You travel in comfort aboard the purpose-built *National Geographic Sea Lion*, which features open decks, spacious cabins, generous windows and an accommodating bow area.

The 31-cabin ship is key to your experience. Zodiacs and kayaks are the perfect vehicles to have up-close views of the dramatic scenery of the Palouse River. Life aboard the ship is warm and welcoming. The lounge graciously accommodates the expedition community during nightly Recaps and wine tastings, and the casual dining room serves meals in single seatings with unassigned tables for easy mingling.

## See, Do and Learn More With an Expert Team

Your time on the river and ashore is spent in the company of a veteran expedition team that is passionate about the region's rich history. Relive moments of the modern era—from early exploration to construction of the dams—with insights from a history expert. Join the geology expert to marvel at layers of ancient basaltic lava. Enjoy accessible wine education from the food and wine expert as you taste the region's diverse terroirs. Capture everything with the help of the National Geographic certified photo instructor. With one staff member aboard for every 10 guests, you're ensured diverse knowledge, varied points of view and engaging companionship.

*Opposite page (clockwise from top): Guests explore the Palouse River by Zodiac; ship officer at sunset; National Geographic Sea Lion; kayaking on the Palouse River.*

# SAVOR THE BOUNTY OF THE PACIFIC NORTHWEST

As you sail through rolling valleys and soaring canyons, delve into the sustainable food and wine movements that thrive in this fertile region.

- Indulge in gourmet, seasonal menus featuring sustainable ingredients sourced primarily from the Pacific Northwest.
- Attend nightly tastings of the region's best wines, personally selected by *Food & Wine* magazine's Executive Wine Editor, Ray Isle.
- Experience the local wine culture at exclusive tastings and events, where winemakers share their craft and passion firsthand.
- Savor cocktails, canapes and spectacular scenery while transiting towering locks in the evening.
- Enjoy the company of a wine expert who offers pairing suggestions and more.

**FOOD&WINE**



## COMPLIMENTARY WINE, BEER & SPIRITS

Experience the full richness and diversity of the Pacific Northwest with complimentary beer, wine and cocktails (excluding premium brands) throughout your voyage.

*Opposite page (clockwise from top): Wine barrels in Walla Walla; locally sourced salmon; guests enjoying wine on the sundeck.*





## Itinerary

Delve deep into the history, harvests and landscapes of the Columbia and Snake rivers while also indulging your senses with the culinary splendors and world-class wines of the region. Travel as early explorers, settlers and Indigenous peoples did—by waterways that stretch far inland from the Pacific Ocean. Enjoy spectacular scenery, including views of Mt. Hood and Mt. Adams. Tour museums and historic sites, taste local produce and wines and actively explore by foot, kayak and Zodiac.



### DAY1: PORTLAND, OREGON/EMBARK

Arrive in the early afternoon in Portland, located in the shadow of snow-capped Mount Hood. Embark in early evening and enjoy wine and champagne as the ship sails under eight of Portland's 12 eclectic bridges along the Willamette River. (D)

### DAY 2: THE DALLES/HOOD RIVER

Immerse yourself in natural and man-made marvels as you explore the scenic Columbia and pass through Bonneville Lock and Dam. Take a steaming cup of coffee to the bow where your naturalists offer honest perspectives on the controversial history of dams along the river. In the afternoon, make a stop at neck-craning Multnomah Falls before an optional hike of iconic Beacon Rock, a basalt column towering 848 feet above the Columbia River, or a visit to the Bonneville Fish Hatchery. Later, enjoy a private event with Syncline Winery at the Columbia Gorge Museum. Savor canapes and Syncline's distinctive wines as you take in 15,000 years



of cultural history, including indigenous art and a massive working steam engine. (B,L,D)

### **DAY 3: CRUISING THE GORGE**

Today, spend the day cruising through some of the most scenic and geologically interesting stretches of the Columbia River and the Columbia Plateau. Your geology experts provide fascinating insight on the glacial floods that sculpted the landscape 13,000 years ago, as your food and wine expert illustrates the expression of such unique terrain through its tastes and tannins. (B,L,D)

### **DAY 4: WALLA WALLA, WASHINGTON**

Drive through some of the most fertile agricultural areas in the nation, with bright, rolling green and purple fields of sprouting wheat, asparagus and famous Walla Walla sweet onions. In the morning, discover the thriving art scene on a guided tour, or choose to visit the Whitman Mission, a standout National Historic Site, where friction between Native Americans and white missionaries erupted into an event that continues to reverberate in American culture. After lunch at a local winery, explore charming downtown Walla Walla at your leisure, perusing local galleries, sampling sweets at the country's #1 candy store or popping into cozy tasting rooms. (B,L,D)

### **DAY 5: PALOUSE RIVER**

The still water of the Palouse River is the perfect mirror for the surrounding basalt cliffs as you set off on Zodiac and kayak adventures. Later, visit Palouse Falls, where waters plunge 200 feet into a churning pool. These falls and the surrounding canyon with its towering cliffs, cavernous holes in the earth and winding water routes are part of geologically unique channeled scablands created by ancient floods. Before a special final dinner, raise your glasses to an unforgettable adventure through the food, wine and history of the Pacific Northwest. (B,L,D)



*Multnomah Falls*

### **DAY 6: CLARKSTON/DISEMBARK**

Arrive in Clarkston this morning and enjoy breakfast on board before transferring to the airport for connecting flights home. Choose to fly from nearby Lewiston, Idaho, or from Spokane, Washington, two hours away. (B)

# National Geographic Sea Lion



Nimble and intimately scaled, *National Geographic Sea Lion* can easily navigate places inaccessible to larger ships. She can venture into fast-moving channels where whales come to feed, nose up to waterfalls in secluded coves and sail into small bays perfect for snorkeling and kayaking. Inviting public spaces foster a sense of shipboard life where everyone is integral to the adventure, engendering a rewarding sense of community.

## Capacity

31 outside cabins accomodating 62 guests.

## Registry

United States.

## Overall Length

152 feet.

## Public areas

The ship features a library; global market; lounge with full-service bar and facilities for films, slide shows and presentations; observation deck; partially covered sundeck with chairs and tables; and LEXspa. An open Bridge provides guests an opportunity to meet the officers and captain and learn about navigation.

## Meals

Served in single seatings with unassigned tables for an informal atmosphere. Menu emphasizes local fare.



*The lounge is the center of life aboard the ship.*

## Accommodations

All cabins face outside with windows, private facilities, and climate controls. Cabins are equipped with Wi-Fi and multiple electrical and USB outlets. Botanically inspired shampoo, conditioner, shower gel and lotion are all available in cabin bathrooms, as well as an Expedition Essentials Kit. Hair dryers, complimentary insulated water bottles and an atlas are available in each cabin.



*Category 2 cabin with single beds.*

## Expedition Equipment

Zodiacs, kayaks, bow camera, hydrophone, splash-cam, underwater video camera and video microscope.

## Staff & Crew

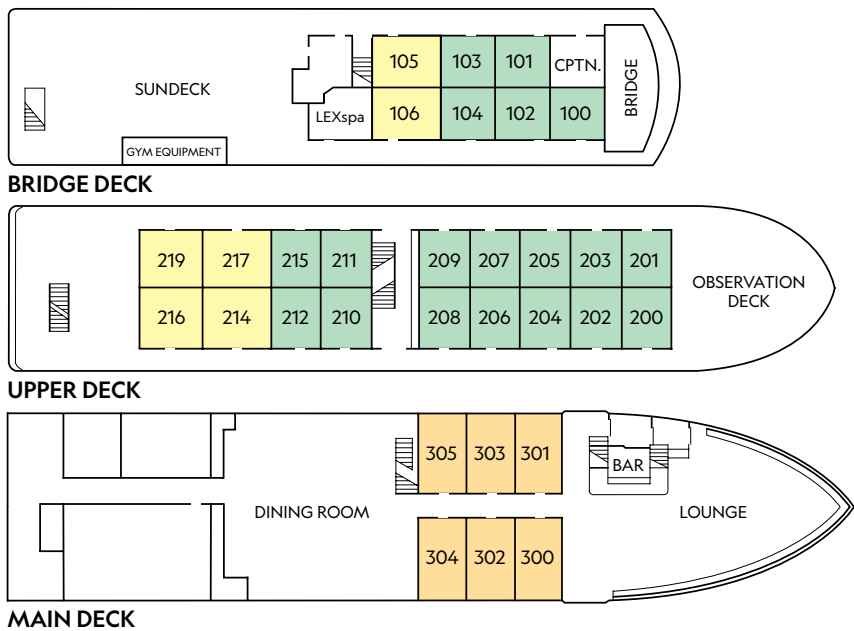
Every staff member is committed to ensuring guests have an unforgettable experience. Your expedition will be led by seasoned naturalists and local guides. A full-time medical professional and certified photo instructor are on board. With a low staff to guest ratio, you can hear different perspectives and gain new insights every day.

## Wellness

The vessel is staffed by a wellness specialist and features exercise equipment, LEXspa and outdoor stretching area.



# Ship Deck Plan & Pricing



## Voyage Dates

April 3-8, 2026

## Advance Payment Details

15% of the cabin fare, per person

Costs are per person, double occupancy unless indicated as solo.

5% Savings

<b>Category 1</b>	<b>\$4,834</b>	<b>\$4,592</b>
Main Deck #300-305 – Conveniently positioned between the dining room and lounge, these cabins feature two single beds and a large view window.		
<b>Category 2</b>	<b>\$6,058</b>	<b>\$5,755</b>
Bridge Deck #100-104; Upper Deck #200-212, 215 – These well-located cabins include two single beds and a window.		
<b>Category 3</b>	<b>\$6,987</b>	<b>\$6,638</b>
Bridge Deck #105, 106; Upper Deck #214, 216, 217, 219 – These cabins feature a seating unit with table and two large view windows. Upper Deck cabins include two lower single beds which can convert to a double bed and a pull-out single bed for a third person; Bridge Deck cabins include two lower single beds only.		
<b>Category 1 Solo</b>	<b>\$7,256</b>	<b>\$6,893</b>
<b>Category 2 Solo</b>	<b>\$9,087</b>	<b>\$8,633</b>

**Note:** Solo occupancy cabins are available in Categories 1 and 2 only. Third person rates are available in certain categories at one half the double occupancy rate.

**Shared Accommodations:** Shares can be arranged at the double occupancy rate in Categories 1 and 2 only.

## INCLUSIVE PRICING

---

- All accommodations aboard ship
- Excursions and airport transfers, as indicated in the itinerary
- All meals as indicated in the itinerary. Meals are inspired by regional cuisine and locally sourced where possible
- Snacks and non-alcoholic beverages, including 24-hour coffee, tea and soda on demand
- Beer, wine, cocktails and spirits, with premium wines and spirits available for purchase
- Hors d'oeuvres and snacks during lounge Recap
- The guidance and expertise of expedition staff
- Lectures and presentations
- Gratuities to local guides and drivers
- Local transportation to/from sites of interest
- Special access permits, park fees and port taxes
- Onboard physician consultations
- Morning stretch classes and 24-hour access to exercise equipment
- Assistance of the certified photo instructor
- Access to the OM System Photo Gear Locker with the latest gear to try out on loan
- Complimentary refillable water bottle
- Exploration tools such as Zodiacs and kayaks
- Basic Wi-Fi, with the option to upgrade

## TAKE ADVANTAGE OF SPECIAL OFFERS

---

**SPECIAL AFFINITY GROUP SAVINGS:** Save 5% on the cabin fare (as indicated) when traveling with the Traveling Aggies. Valid on this departure date of the *Columbia and Snake Rivers: Food, Wine and History 6-Day*, for new bookings only, subject to availability, may not be combined with other offers and is not applicable on airfare or extensions.

**BRINGING THE KIDS:** Sharing the expedition with your kids or grandkids is a life-enhancing experience. Take \$500 off the double occupancy price for each person under the age of 18 at the time of travel. Not applicable on airfare.

## TERMS AND CONDITIONS

---

Prices quoted in this brochure are per person based on double occupancy in USD. Prices quoted are valid at the time of printing, and are subject to change and availability at time of booking. Under normal conditions the total expedition price is guaranteed at the time advanced payment is made. However, our expedition pricing is determined far in advance of initial departure on the basis of then-existing projections of fuel and other costs. In the event of increases in those costs, including but not limited to increases in the price of fuel, currency fluctuations, increases in government taxes or levies, or increased security costs, we reserve the right to adjust the price of your expedition or add a surcharge to cover such unexpected increases. We will always provide an explanation of the reason for increase in costs.

**COST INCLUDES:** All amenities listed in inclusive pricing above. Unused services or items included in this program are non-refundable.

**NOT INCLUDED:** Airfare; pre- and post-expedition extensions; additional hotel nights; private transfers; travel protection plan; REAL I.D., passport, visa, and immigration fees; crew gratuities; items of a personal nature such as spa treatments, premium wines and liquors, laundry, enhanced and premium Wi-Fi plans and phone services.

**AIRFARE:** Airfare is an additional cost. Lindblad Expeditions will gladly assist in making your air arrangements for a \$50 per person service fee.

**RESERVATIONS:** To confirm your place, an advance payment of 15% of the cabin fare, per person is payable by Visa, MasterCard, American Express, Discover or check. Receipt of advance payment indicates your acceptance of the terms and conditions.

**FINAL PAYMENT:** Due no later than 120 days prior to departure. Lindblad Expeditions reserves the right to cancel your reservation if payment has not been received by final payment due date.

**TRAVEL PROTECTION PLAN:** Travel and medical insurance are recommended and are available at an additional cost. Information will be sent to you upon registration.

**ITINERARY MODIFICATIONS:** Itineraries, routing and speakers listed are correct at time of publication, and are subject to change.

**ENTRY AND VISA REQUIREMENTS:** Guests are advised to verify travel documents (passport/transit visa/entry visa) for the country(s) through which they are transiting and/or entering. Reliable and most current information regarding international travel can be found by contacting the consulate/embassy of the country(s) you are visiting or transiting through. We will not be responsible if you are denied entry or transit into a country if you are unable to provide valid documents as per the country's requirement.

**RESPONSIBILITY AND OTHER TERMS & CONDITIONS:** Certain other provisions concerning, among other things, limitations of Lindblad Expeditions' and National Geographic Expeditions' (a division of National Geographic Partners, LLC) liability for loss of property, injury, illness or death during the voyage will be provided to all guests on the ship's ticket sent prior to departure or upon request. By registering for a trip, the guest agrees to all such terms and conditions.

## CANCELLATION FEE POLICY (PER PERSON)

---

**120 or more days** prior to expedition start: **No penalty:** Advance Payment will be credited toward your next expedition\*\*

**119-90 days** prior to expedition start: **50% of trip cost\*\*\***

**89-0 days** prior to expedition start: **100% of trip cost\*\*\***

\*\*Advance payments will be credited in the form of a Lindblad Expeditions Travel Certificate, valid for 12 months from the date of cancellation, and which may only be applied towards final payment on any future booking.

\*\*\*Trip cost is total price paid including extensions, charter airfare and other additional services.

We strongly recommend that you purchase a travel protection plan.

**Photo Credits:** Thomas Barwick, Marc Cappelletti, Jeff Litton, Montana Historical Society, Emily Mount, R. Aaron Raymond, Douglas Scaletta, David Vargas.

No funds donated to The Association of Former Students or to Texas A&M University have been used in the production or mailing of this travel brochure; all such costs are covered by the tour supplier.



# Reservation Form



## Contact Information

Please send reservation to:  
Lindblad Expeditions  
96 Morton Street  
New York, NY 10014  
Ph: (833) 985-1261  
Fax: (646) 390-2050  
E-mail: groups@expeditions.com

## Columbia and Snake Rivers: Food, Wine and History 6-Day

APRIL 3-8, 2026  
ABOARD NATIONAL GEOGRAPHIC SEA LION

## Passenger Information

Please reserve \_\_\_\_\_ place(s).

Guest 1: \_\_\_\_\_  
(Name as it appears on I.D.)

Date of Birth: \_\_\_\_\_ M/F: \_\_\_\_\_

Guest 2: \_\_\_\_\_  
(Name as it appears on I.D.)

Date of Birth: \_\_\_\_\_ M/F: \_\_\_\_\_

Street Address: \_\_\_\_\_

City: \_\_\_\_\_ State: \_\_\_\_\_ ZIP: \_\_\_\_\_

Home Phone: \_\_\_\_\_ Cell Phone: \_\_\_\_\_

Business Phone: \_\_\_\_\_ Fax: \_\_\_\_\_

Email: \_\_\_\_\_

Accommodations: ☐ Double ☐ Single ☐ Twin share with a friend  
☐ Share with roommate assigned by tour operator.

Please indicate choice of cabin category in order of preference:

1st choice: \_\_\_\_\_ 2nd choice: \_\_\_\_\_

**Advance Payment Information:** 15% of the cabin fare per person.

☐ If paying by check, please make payable to: **Lindblad Expeditions.**  
Enclosed is my advance payment of \$ \_\_\_\_\_

☐ If paying by credit card, we will contact you to finalize your booking and collect payment information.

# Columbia and Snake Rivers: Food, Wine and History 6-Day

## EXPEDITION HIGHLIGHTS

- Follow the path of Lewis and Clark and learn about the ancient and cultural history of the region from a history expert.
- Enjoy locally sourced, gourmet meals, as well as nightly wine tastings curated by *Food & Wine* magazine's Executive Wine Editor, Ray Isle.
- Witness the region's geological wonders—from Beacon Rock to Multnomah and Palouse Falls—and explore up close and at water level aboard kayaks and Zodiacs.
- Travel through eight locks that lift or lower you some 700 feet in all.
- Gain exclusive access, including a private reception at the Columbia Gorge Museum and private tours and tastings with local winemakers.

### LINDBLAD EXPEDITIONS: PIONEERING RESPONSIBLE EXPLORATION

From our consistent quest to improve our practices to offsetting 100% of our carbon emissions, supporting conservation, science, and education initiatives around the planet, and investing in the communities in the places we explore, we are guided by our commitment to explore responsibly.



The Association of Former  
Students Texas A&M University  
505 George Bush Drive  
College Station, TX 77840

PRSRT STD  
U.S. POSTAGE  
**PAID**  
LINDBLAD  
EXPEDITIONS



Printed on 10% recycled content paper with soy-based inks.  
We recommend that you pass this along for others to enjoy or recycle.

GRP-TEXA&M-LEWI526