

APRIL 15-24, 2017

Featuring Special Guest
Lecturers and WWI Experts,
Professor Carl Caldwell and
Dr. Peter Caddick-Adams



WWI History

by River Ship



10 DAYS FROM AMSTERDAM TO BRUSSELS

Howdy, Ags!

Please join us on a 10-day journey through the waterways of Holland and Belgium to discover the picturesque architecture, charming towns, and centuries of history that have formed the area known as The Flanders. Embark in Amsterdam and set sail to Rotterdam, Ghent, and Antwerp, plus a special included excursion to Ypres and the Battlefields of Eastern Flanders. Journey on to Maastricht, with its cobblestone square and lively university population, before disembarking in Namur—located on the beautiful Meuse and Sambre rivers. Continue on to France to visit the museums and monuments of Verdun, constructed to honor those who had fought and fallen during the Great War.

Joined by guest lecturers and WWI experts, Professor Carl Caldwell and Dr. Peter Caddick-Adams, you will learn first-hand about the historical impact and significance of the areas visited. In addition, a dedicated Orbridge Travel Director and knowledgeable local guides will ensure you experience and learn about this area's dynamic historical past. Your vessel for this program is the *Avalon Artistry II*—built in 2013—featuring deluxe accommodations, a dedicated staff, and an exceptional variety of amenities.

Stateroom availability is limited. With significant savings of more than \$800 per couple, we anticipate this program will fill quickly, so be certain to reserve your spot today and share this brochure with family and friends who may be interested in traveling with you. Please reserve online at <http://texas-am.orbridge.com>, by phone at (800) 633-7514 or by returning the enclosed reservation form.

Gig 'em,

Jennifer Bohac

Jennifer Bohac '87, Ph.D.
Director of Travel Programs

Professor Carl Caldwell

Peter C. "Carl" Caldwell is the Samuel G. McCann Professor of History at Rice University. He is the recipient of numerous grants, including one from the Center for German and European Studies at Georgetown University.

Professor Caldwell's published work has addressed democracy and politics during Weimar Germany's ill-fated first experiment with political democracy; the cult of Soviet-style planning in postwar East Germany; and the philosophical roots of European radicalism in 19th-century German philosophy. In 2011, he published an edited volume entitled *German Unification: Expectations and Outcomes*.

Currently, Professor Caldwell is working on a project linking the development of political thought and culture in West Germany to the real and perceived crises of the welfare state.

Dr. Peter Caddick-Adams

Dr. Peter Caddick-Adams is a lecturer in military and security studies at the UK Defence Academy. He is widely regarded as the battlefield guide of choice for princes, peers and politicians, military commanders, and senior executives.

He is the author of *Monty and Rommel*, which analyzes the leadership, strategy, and logistics of the two famous generals. Awarded the Territorial Decoration in 1997, he was the official NATO Historian in Bosnia during 1996-97, as well as the UK Historian during the Iraq War of 2003, and has written extensively on the campaigns he witnessed.

With over 500 battlefield visits around the world to his credit, he covers all periods in history from the Romans to the present day, and has also led many official commemorations with serving soldier and veterans.

Dr. Caddick-Adams is a Fellow of the Royal Historical Society, as well as a member of the Guild of Battlefield Guides and the British Commission for Military History.

Sail Through History

During this enlightening river cruise, explore Rotterdam's historic harbor, the WWI battlefields of Ypres and Flanders, Namur's enchanting medieval squares and streets, and the historic monuments of Arras, Somme, and Verdun.





St. Baaf's Cathedral Ghent



Menin Gate



Keukenhof Gardens

Your 10-Day Itinerary*

- Day 1:** En route from U.S.
- Day 2:** Arrive Amsterdam, Netherlands – Embarkation (D)
Welcome dinner
Overnight: *Avalon Artistry II*
- Day 3:** Rotterdam (B,L,D)
Guided sightseeing, included excursions: UNESCO World Heritage Site of Kinderdijk or Keukenhof Gardens
Overnight: *Avalon Artistry II*
- Day 4:** Ghent, Belgium (B,L-onboard,D)
Full-day excursion to Great War monuments of Arras and Somme in France
Overnight: *Avalon Artistry II*
- Day 5:** Ypres / Eastern Flanders (B,L-onboard,D)
WWI battlefields excursion, Menin Gate Last Post Ceremony
Overnight: *Avalon Artistry II*
- Day 6:** Antwerp (B,L,D)
Guided sightseeing, Brussels excursion
Overnight: *Avalon Artistry II*
- Day 7:** Maastricht, Netherlands (B,L,D)
Guided sightseeing, leisure time
Overnight: *Avalon Artistry II*
- Day 8:** Namur, Belgium (B,L-onboard,D)
Guided city tour, excursion to Ardennes region and Bastogne
Overnight: *Avalon Artistry II*
- Day 9:** Namur – Disembarkation / Verdun, France / Brussels (B)
Guided sightseeing, Verdun memorials
Overnight: *Radisson Blu Royal Hotel*
- Day 10:** Brussels / Depart for U.S. (B)

Activity Level: Guests should be able to enjoy two hours or more of walking and be sure-footed on stairs and cobbled surfaces.

Program Highlights

- Hear lectures from Professor Caldwell. *The Origins of World War One: Who Was To Blame?* explains three major arguments for why the war started, stressing how the international system had succeeded for years in preventing war yet somehow broke down on this occasion. *A New Kind of War in Europe* shifts from the origin of the war to the war itself, concentrating on violations of international conventions on war, the transformation of states and societies, and the breakdown of order as manifested in revolutions in Germany, Austria-Hungary, and Russia. *The New Politics of World War One* looks at the rise of fascism and bolshevism as phenomena coming directly from World War One, and connects the horrors of 1914-1918 with those of Stalinism and Nazism.
- Dr. Caddick-Adams will offer a British perspective of the Great War to guests.
- Join the included, full-day excursion to the regions of Arras and Somme in France for guided tours of the Carrière Wellington Museum, Thiepval Memorial to the Missing of the Somme, and Vimy Ridge.
- View the WWI battlefields of Ypres and Eastern Flanders, where thousands of war graves and memorials for the fallen line the expansive landscape, and experience the nightly Menin Gate Last Post Ceremony.
- Revel in the impressive architecture, vibrant atmosphere, and notable monuments of Antwerp during a guided tour.
- Enjoy a guided tour of Namur to take in the medieval squares and relaxing atmosphere, plus see the Namur Fortress—one of Europe's largest.
- What's Included:** 7 nights aboard the *Avalon Artistry II* and 1 night at Radisson Blu Royal Hotel in Brussels; 1 welcome reception, 8 breakfasts, 6 lunches, and 7 dinners served with complimentary regional wine and beer; onboard activities; all gratuities; and airport transfers for guests arriving and departing during the suggested times.

*Subject to change.

Avalon Artistry II



The *Avalon Artistry II* is intimate, elegant, and a perfectly relaxing stage for exploration.

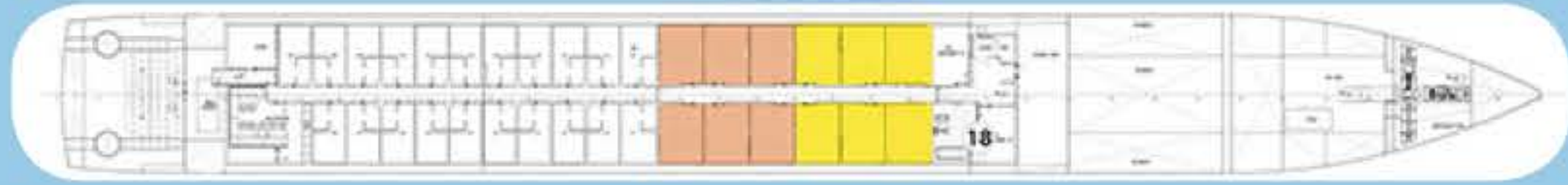
Royal Deck (Top)



Sapphire Deck (Middle)



Indigo Deck (Lower)



Category D, E

Stateroom Category

■ D ■ E

Queen bed, two upper windows, spacious 3-door closet with shelves, vanity, private bathroom with shower, flat screen satellite TV, nightly turn-down service, minibar, safe. 172 sq. ft.

■ A ■ B ■ P

Queen bed, floor-to-ceiling windows with open-air balcony, spacious 3-door closet with shelves, vanity, private bathroom with shower, flat screen satellite TV, nightly turn-down service, minibar, safe. 200 sq. ft.

■ Suite

King bed, floor-to-ceiling windows with open-air balcony, bedside tables with reading lamps, spacious 3-door closet with shelves, sofa, vanity, private bathroom with shower, flat screen satellite TV, nightly turn-down service, minibar, safe. 300 sq. ft.



Category A, B, P



Suite

RADISSON BLU ROYAL HOTEL, BRUSSELS

For your last evening, settle into 4-star Art Deco elegance within Brussels' city center. Just a short walk away is the Grand Place and Manneken Pis. Enjoy access to the 24-hour fitness club featuring modern equipment and sauna, and three restaurants within the hotel, including the Michelin-awarded Sea Grill.



Your Orbridge Travel Director:

Every departure is accompanied by one of our premier Travel Directors, all of whom have extensive knowledge and experience as guides. Enriched by their accompaniment and enthusiasm, enjoy the cultures and locations you explore with added confidence, understanding, and appreciation.



Orbridge



Optional Pre-Tour: **Amsterdam**

It's a city where historical elegance meets modern, cutting-edge design; and one that influences architecture, art, food, and fashion. Embrace Amsterdam for its museums and historic homes, and its outdoor markets, shops, and cafés. Explore the neighborhoods of Canal Ring, the Old Center, and Jordaan and Museum Quarter, which houses both well-known masters and the Heineken brewery. Stroll along 9 Straatjes (9 Streets), and be sure to stop for a classic coffee and stropwafel.

Extension Itinerary*

Day 1: *En route* from U.S.

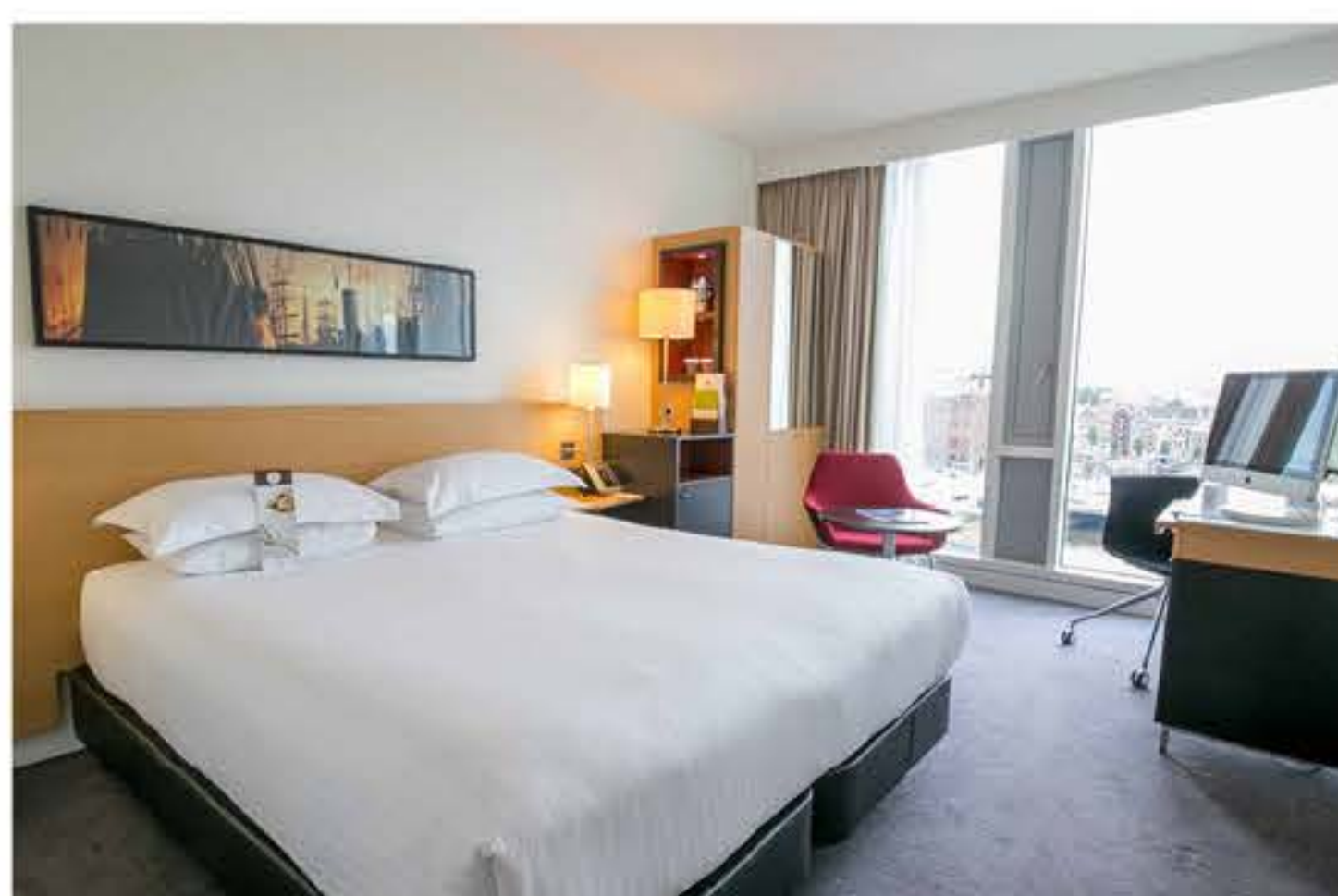
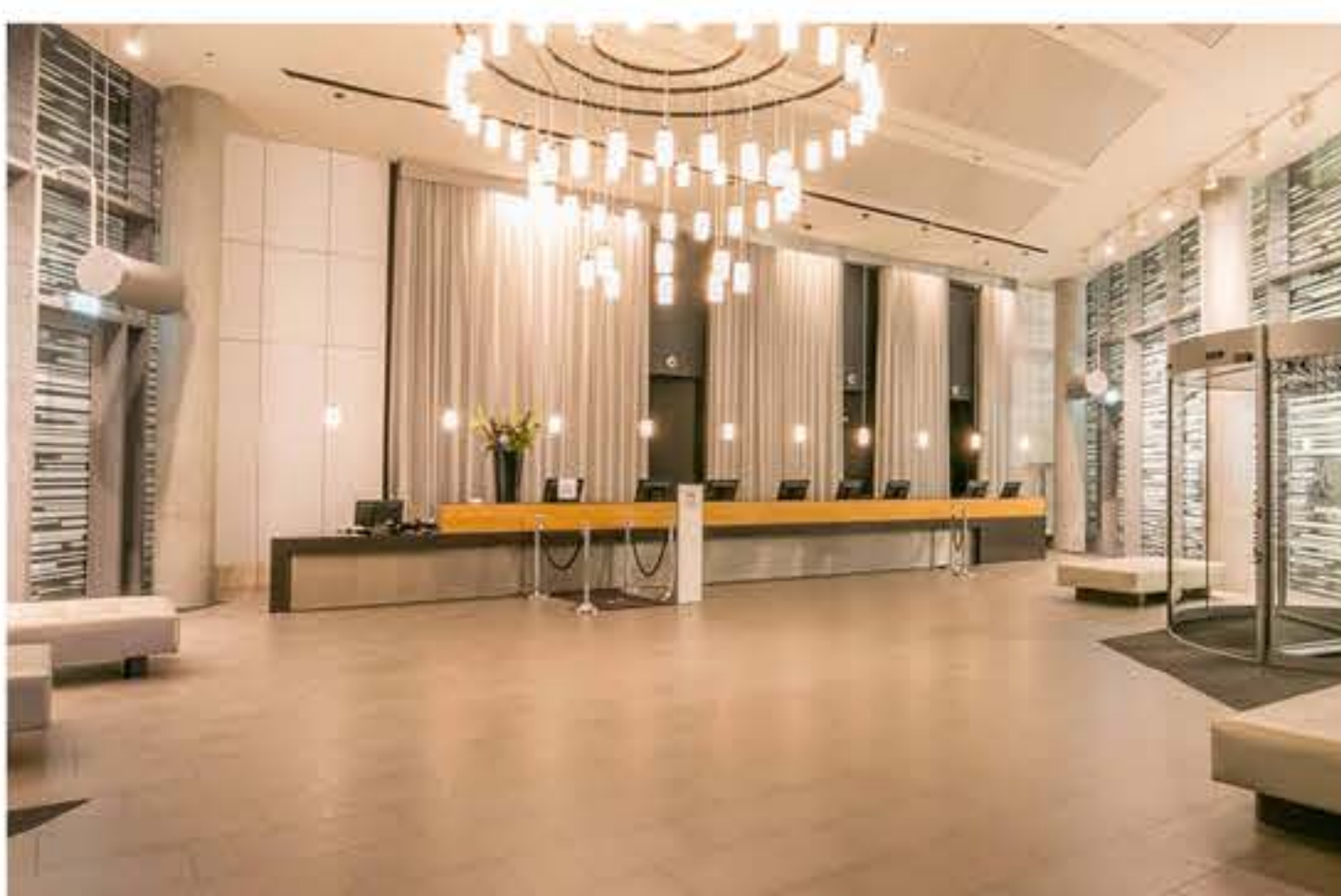
Day 2: Arrive in Amsterdam, Holland
Welcome to Amsterdam! Settle into your hotel room, then enjoy the remainder of your day exploring this remarkable city at your leisure.

Day 3: Amsterdam (B)
Today, join your local guide to discover the city's treasures during a canal boat cruise. Admire the prominent homes dating back to Amsterdam's "Golden Age" that line the elegant grachten. This afternoon, set out for a guided tour of the Rijksmuseum.

Day 4: Amsterdam / Main Program
Begins (B)
After breakfast, enjoy a leisurely day in town before joining the group for the main program and embarkation.

What's Included

- Two nights accommodations at the DoubleTree By Hilton Amsterdam Centraal Station (shown below) or similar, with breakfast each morning
- Guided Amsterdam Canal cruise
- Guided tour to the Rijksmuseum to view some of the 8,000 pieces of art and history on display, including paintings by Johannes Vermeer and Rembrandt's civic guard portrait in the Night Watch Gallery
- Access to hotel concierge to provide advice and assistance arranging leisure activities
- Group transfers from the airport to hotel and from the hotel to the vessel for the Main Program; gratuities to the host, local guides, housekeeping staff, drivers, and porters



Early Reservation Bonus:

See reverse for details.

FREE ORBRIDGE 
EXPEDITION LIBRARY

World War I History by River Ship

APRIL 15-24, 2017
 Amsterdam Pre-Tour: April 13-16, 2017

- Option 1:** Reserve online now at <http://texas-am.orbridge.com> or call (800) 633-7514.
- Option 2:** Secure your reservation with a deposit charged to the credit card below, or with an enclosed check payable to: Orbridge, LLC.

Standard Rate: <small>from</small> \$4,899 <small>\$7,349 Single</small>	Special Rate: <small>from</small> \$4,495* <small>\$6,743 Single</small>
Amsterdam Pre-Tour: \$895* Amsterdam Pre-Tour Single: \$1,095	

Guest Information:

Guest #1 Name: _____ Class Year _____
 Guest #2 Name: _____ Class Year _____
 Address: _____
 City: _____ State: _____ Zip: _____
 Email: _____ Phone: _____ Alt. Phone: _____
 Category Preference (if applicable): 1st choice _____ 2nd choice _____

Deposit:

(#) _____ guests joining program (\$850/person) +
 (#) _____ guests joining extension (\$500/person) = **Total deposit: \$** _____

Deposit Payment:

Check enclosed
 Online Check/ACH
 MasterCard/Visa
 American Express
 Discover
 Card #: _____ Exp. date: _____ CW: _____
 Name (as printed on card): _____
 Billing address (if different from above): _____
 City: _____ State: _____ Zip: _____

I/we have read, understand, and agree to the full Terms & Conditions at <http://terms.orbridge.com> and detailed in program documents; and that Orbridge LLC is authorized to charge my credit card above and/or take my/our deposit for this program.

Signature: _____ Date: _____

Mail or fax reservation form and deposit to: Traveling Aggies, The Association of Former Students
 505 George Bush Drive, College Station, TX 77840
 Fax: (979) 845-9263

No funds donated to The Association of Former Students or to Texas A&M University have been used in the production or mailing of this travel brochure; all such costs are covered by the tour supplier.

Stateroom Category	Standard Rate	Special Rate*	Stateroom Category	Standard Rate	Special Rate*
Category E	\$4,899	\$4,495	Category A	\$5,899	\$5,495
Category D	\$5,099	\$4,695	Category P	\$6,399	\$5,995
Category B	\$5,699	\$5,295	Suite	\$7,399	\$6,995

Registration, Deposits and Final Payment. To confirm and secure your reservation, a deposit of \$850 per person per program, a deposit for any extension(s), and any non-refundable advanced payments, payable by check, online check/ACH, money order, wire transfer of same day U.S. funds, or major credit card, is due at the time of registration. Final payment, including any extension(s) and optional(s), is payable by check, online check/ACH, money order, or wire transfer of same day U.S. funds ONLY and due no later than 90 days prior to the scheduled program departure date. If your reservation is made fewer than 90 days prior to departure, the entire cost of the program, including any extension(s) and optional(s), is due at the time of registration by check, money order, or wire transfer of same day U.S. funds ONLY. If final payment is not received by Orbridge at least 90 days prior to the scheduled program departure date, Orbridge may, at any time and with or without notice, cancel your reservation in its sole discretion with no right of refund. All payments we receive from you are herein defined as "Payments." CST#2098750-40 WST#602828994

Cancellations and Refunds. All cancellations must be submitted to Orbridge in writing and will be subject to a cancellation fee ("Cancellation Fee") as follows: (a) if the cancellation notice is received by Orbridge 275 or more calendar days prior to the scheduled departure date, all deposits will be fully refunded; (b) if the cancellation notice is received by Orbridge between 274 and 151 days prior to the scheduled departure date, the Cancellation Fee will be \$500 per person per program and \$300 per person per program for extensions; (c) if the cancellation notice is received by Orbridge between 150 and 91 days prior to the scheduled departure date the Cancellation Fee will be the full deposit per person per program including any extension; (d) if the cancellation notice is received by Orbridge 90 or fewer days prior to the scheduled departure date, the Cancellation Fee will be the full program price. In addition to and not in lieu of the foregoing, a Cancellation Fee equal to 100% of the carrier charge applies to all non-refundable airfares due to your cancellation made at any time prior to the scheduled program departure date, as applicable. Refunds, if any, of any Payments in excess of the aggregate Cancellation Fee shall be processed within 30 calendar days of our receipt of your written notice.

For complete Terms & Conditions, visit <http://terms.orbridge.com> | Copyright © 2016 Orbridge, LLC | www.orbridge.com | (866) 639-0079

*Special group rate; limited offer. Rates are per person based on double occupancy in U.S. dollars. For single reservations, a 150% supplement is added to the applicable cabin category's discounted rate; availability limited. Airfare not included. **A complement to the educational component of this journey, Expedition Libraries are curated collections of useful resources and background reading tailored to this program. Place your deposit on or before the specified date, and one Expedition Library per room will be sent upon receipt of final payment. Libraries may be purchased; please call for details.





Traveling Aggies

A PROGRAM OF
The Association of Former Students®



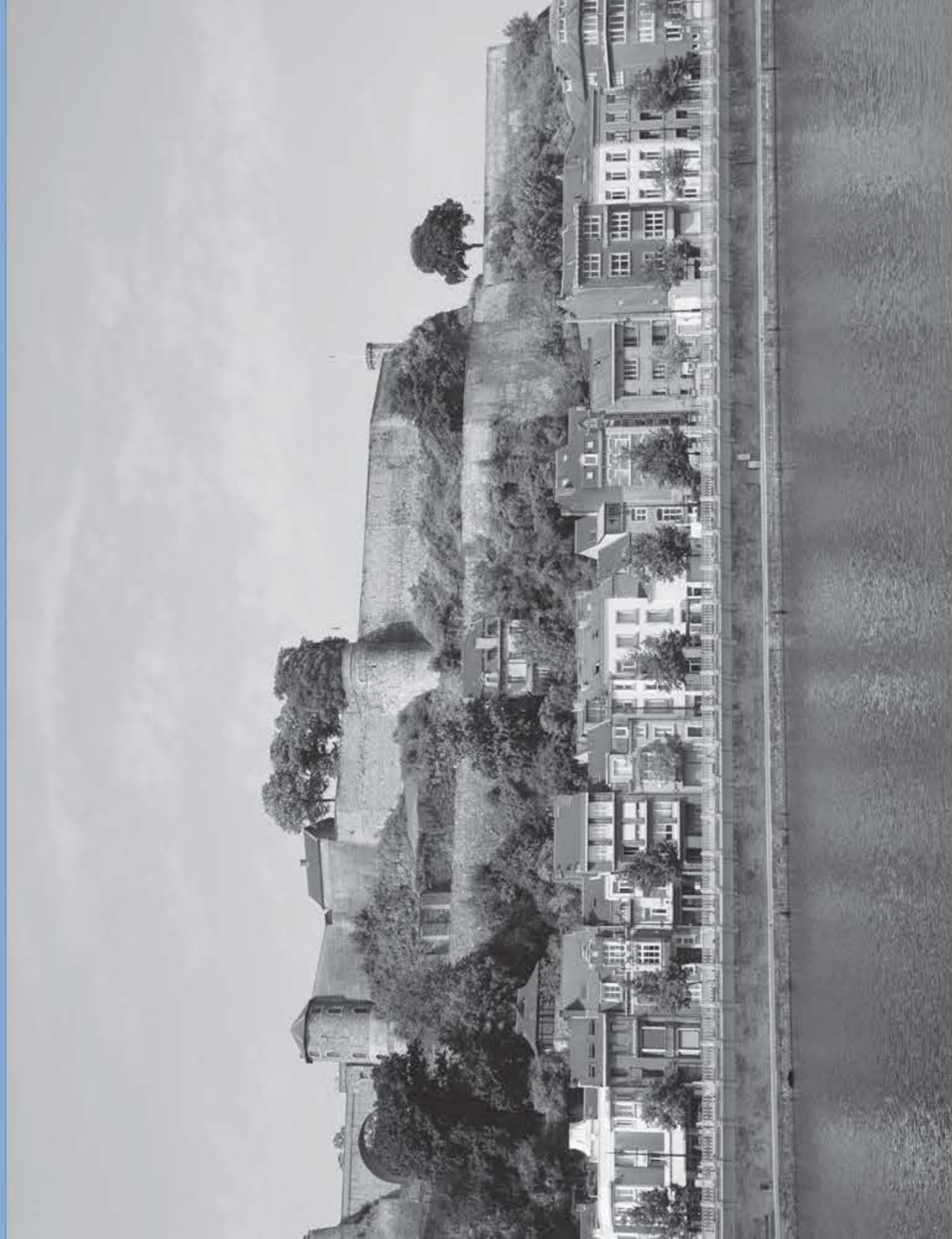
WWI History by River Ship

APRIL 15-24, 2017

Special Traveling Aggies Rate: **Save more than \$800**
per couple

FREE ORBRIDGE 
EXPEDITION LIBRARY

When you reserve
by October 31, 2016**



Traveling Aggies
The Association of Former Students
505 George Bush Drive
College Station, TX 77840

PRSRT STD
U.S. POSTAGE
PAID
PERMIT NO. 825
SAN DIEGO, CA