

CRUISE from STRASBOURG to BERNKASTEL

NO SINGLE
SUPPLEMENT
FOR SOLO
TRAVELERS



Holiday Markets

featuring **PARIS**

SPONSORED BY



The Association
OF FORMER STUDENTS®
TEXAS A&M UNIVERSITY®

Traveling Aggies

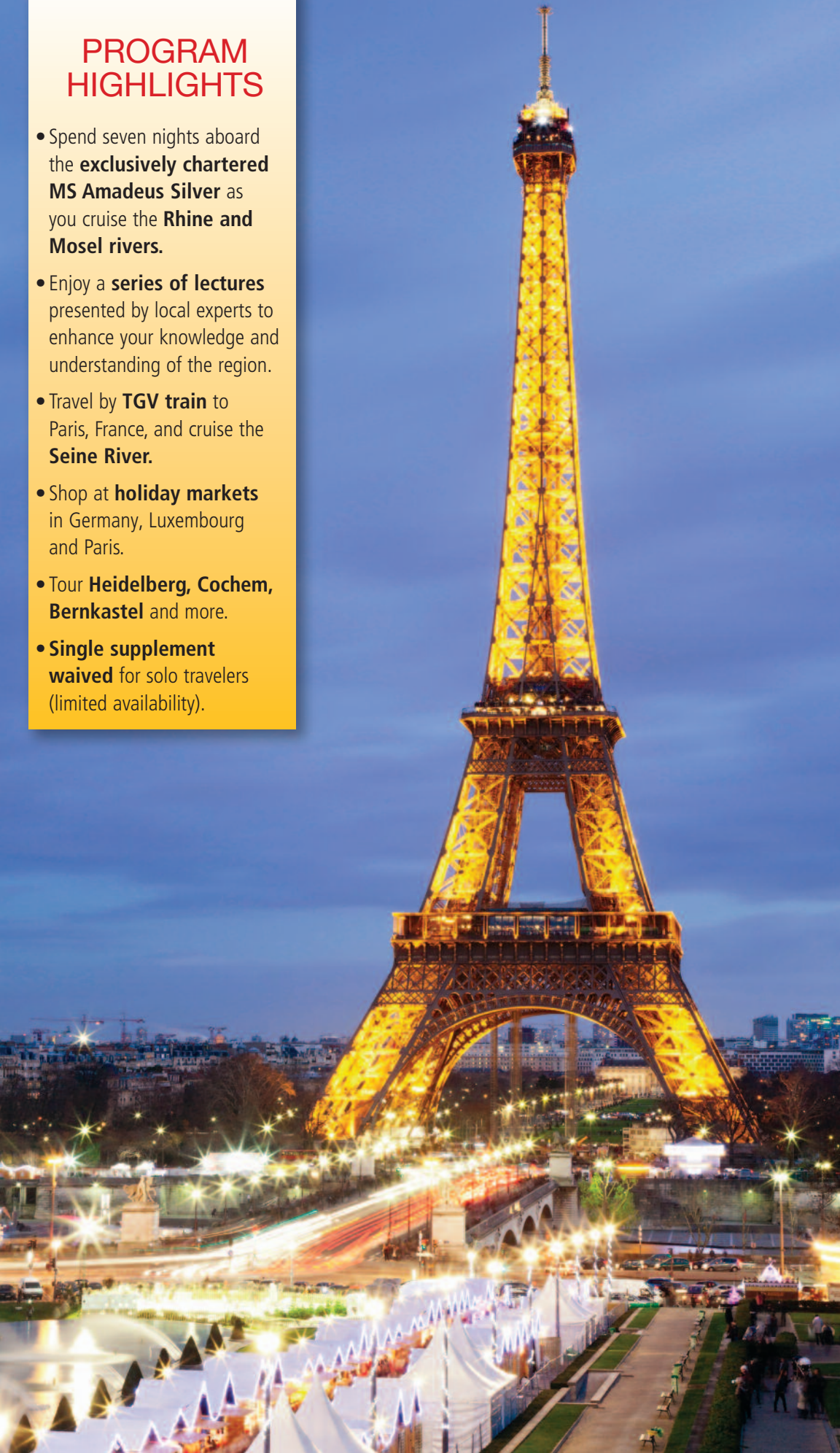
NOV. 27-DEC. 8, 2015

800-633-7514

AggieNetwork.com/Travel

PROGRAM HIGHLIGHTS

- Spend seven nights aboard the **exclusively chartered MS Amadeus Silver** as you cruise the **Rhine and Mosel rivers**.
- Enjoy a **series of lectures** presented by local experts to enhance your knowledge and understanding of the region.
- Travel by **TGV train** to Paris, France, and cruise the **Seine River**.
- Shop at **holiday markets** in Germany, Luxembourg and Paris.
- Tour **Heidelberg, Cochem, Bernkastel** and more.
- **Single supplement waived** for solo travelers (limited availability).





Heidelberg

Howdy, Ags!

Cherished holiday memories are created through time-honored rituals passed down through generations. This year, we invite you to witness the unparalleled Yuletide traditions of three countries: Germany, Luxembourg and France. In Germany, explore holiday markets along the Mosel and Rhine rivers, and in Luxembourg and Paris, witness stunning seasonal displays.

Embark on a seven-night cruise in Kehl. Along the way, you will be introduced to some of Germany's most charming towns and cities, where traditional holiday markets have been a part of annual celebrations for centuries. Explore the towns and enjoy ample free time to shop for Christmas gifts or mementos. Your experience ends with three nights in Paris, a visit special to AHI's Holiday Markets journey.

This program promises an unparalleled experience. From magnificent scenery to engaging cultural opportunities, you will be enveloped in the Old World holiday spirit and be able to escape the frantic pace of the holidays at home as you experience the season of Advent in Europe. Space is limited on this memorable journey, so we encourage you to make your reservation today!

Gig 'em!

Jennifer Bohac

Jennifer Bohac '87, Ph.D.
Director, Travel Programs
The Association of Former Students

AggieNetwork.com/Travel

"Youth comes twice in life. When you're young and when you want to be. The Traveling Aggies of Texas A&M are a great way to restore that youthful feeling!"

~ Fred '61 and Sharon Hudspeth

"If you have ever wondered about taking a trip with the Traveling Aggies, stop wondering and just go! You will love it."

~Mary Labay

"What a great way to travel with the Aggie Family and a great way to move into the 'empty nest' years! Whoop!"

~Glenn '78 and Lauren Hart

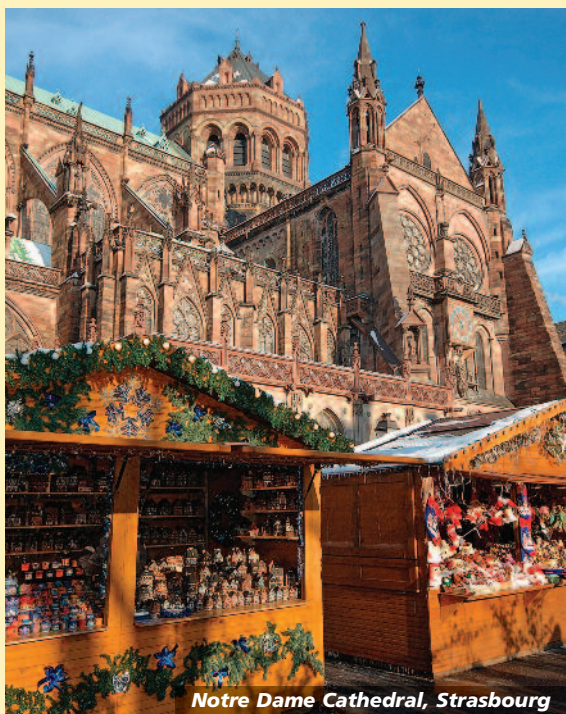
"We have done several trips with the Traveling Aggies, and just can't say enough about how wonderful it is to have our instant family traveling with us. And to have everything arranged so that we know we're getting the best option is terrific! So much fun!"

~ Robert '73 & Linda '75
Flesher



Strasbourg

The towns along the Rhine and Mosel rivers in Germany are troves of history and beauty ready to captivate travelers year-round. However, nothing compares to visiting during the holidays. Spend the days taking in captivating sites and admiring breathtaking landscapes with picturesque winter scenes. Then, at night, watch as Germany's enchanting towns come alive with their renowned holiday markets. Here, experience a fairy-tale holiday that will delight each of your senses. Taste freshly baked gingerbread, warm glühwein and roasted chestnuts; hear carolers singing traditional songs; feel your cheeks blush in the crisp winter air; and peruse the offerings of local merchants. Also experience a Yuletide delight in Luxembourg, and witness Paris, the City of Light, dressed in its seasonal best as you embrace the spirit of Advent in Europe.



Notre Dame Cathedral, Strasbourg

| DAY-BY-DAY ITINERARY |

DAY ONE

IN TRANSIT

Depart your gateway city for Frankfurt, Germany.[†]

[†] Provided for AHI FlexAir participants.

DAY TWO

D

FRANKFURT, GERMANY | KEHL

Upon arrival, transfer[†] to the pier in Kehl and embark the MS Amadeus Silver.

| UNESCO |

Trier's **Porta Nigra** and the **Upper Middle Rhine Valley** in Germany as well as the **historic center of Strasbourg** in France are the UNESCO World Heritage sites featured in this program.



Germany's Holiday Markets

During Advent, veritable villages of small wooden kiosks festooned with fresh pine branches, fluttering red ribbons and festive lights spring up in town squares across Germany. Although other cities across the world have incorporated similar holiday markets, none compare to those in Europe's original Tannenbaum territory.

In these Christkindlmarkts, which date from the Late Middle Ages, the aromas from authentic bratwurst, fresh-baked pastries and simmering glühwein mix with the laughter of locals and tourists as they enjoy age-old Yuletide traditions.

Handcrafted treasures from local artisans are available to take home as a souvenir or present, but the true gift of the markets is experiencing the holidays among the seasonal merriment in a magical atmosphere.

Above: Market in Trier

Later, join your fellow travelers on the ship for a Welcome Reception and Dinner featuring regional wines.

DAY THREE **B I L I D** **KEHL | STRASBOURG, FRANCE**

Excursion: *Strasbourg*. Enjoy a guided walking tour of the town's historic center. Discover Notre Dame Cathedral and the museums of the Palais Rohan and St. Thomas Church.

Independent Exploration: Shuttles will be provided this evening between the port in Kehl and Strasbourg's city center for passengers who want to explore the holiday markets.

DAY FOUR **B I L I D** **SPEYER | HEIDELBERG | WORMS** **Educational Focus: *The Tradition of the***

Holiday Markets. From Christmas trees to booths selling festive decorations and gifts, holiday customs abound in Germany. During this lecture, learn about Advent in Germany and the storied history of the markets.

Excursion: *Romantic Heidelberg.* Heidelberg's eponymous university is Germany's oldest institution of higher learning. Explore the town with a stroll along the Hauptstrasse and visit the castle overlooking the Neckar River. See the university, the town hall, the market square and the Ritter, an excellent example of German Renaissance architecture. The excursion continues with a visit to Burg Hornberg — Hornberg Castle — and its vineyard.

Later, rejoin the ship in Worms, where you will have free time this evening to explore the town's holiday market.



Cochem on the Mosel River



Musician in Paris

DAY FIVE

B I L I D

WORMS | RÜDESHEIM

Excursion: *Walking Tour of Worms.*

Explore this ancient city, which has played a significant role in many historic events, including the advent of Martin Luther and the Reformation. Its synagogue is Germany's oldest.

Educational Focus: *Castles and Legends of the Rhine.* The Rhine boasts more castles than any other river in the world. Learn about Loreley, the siren whose song bewitched many sailors and caused ships to crash into the rocks, and many other tales. Gain a deeper appreciation for this storied region from our local expert.

Independent Exploration: Enjoy the charming city of Rüdesheim and its holiday market.

DAY SIX

B I L I D

KOBLENZ

Today, sail through the beautiful Rhine Gorge en route to the Mosel River and Koblenz, and pass Loreley Rock.



Loreley Rock

Excursion: *Koblenz.* Enjoy a walking tour of Koblenz. See the fountain in front of the town hall; the Church of Our Lady, with a Gothic choir and baroque towers; the Old Castle; and the Old Merchant's Hall.

Independent Exploration: Later, enjoy free time to explore the offerings from merchants at Koblenz's holiday market.

Educational Focus: *The Wines of the Mosel.* Learn about the Mosel Valley terroir, the climate, topography, soil, water and other natural elements that determine the qualities of this region's wines. Put your newfound knowledge to use with a tasting.



Notre Dame Cathedral on the Seine River

DAY SEVEN

B I L I D

COCHEM

Excursion: Cochem. Explore Cochem, which for centuries has been renowned for its idyllic location along a bend on the Mosel River.

Gates and other remnants of the 14th-century town wall still remain and add to the charm of this medieval town, which Reichsburg Castle overlooks from a hill. The original castle was built in the early 11th century. Enjoy a guided walking tour of the town. Afterward, there will be time at leisure.

DAY EIGHT

B I L I D

BERNKASTEL | TRIER

Excursion: Trier and Bernkastel. Once an outlying capital city of the Roman Empire, Trier, a short drive from Bernkastel, boasts a trove of ruins. See the Porta Nigra and visit imperial baths outside of Rome and a palace built by Constantine. See the Cathedral of St. Peter and Church of Our Lady and more of Trier's treasures. Return to Bernkastel for a guided tour. The 700-year old town has a pretty market square lined with half-timbered houses. See the late-Renaissance town hall, St. Michael's Church and more.

This evening, gather with your fellow travelers on the ship and recount your adventures during a Farewell Reception and Dinner.

DAY NINE

B

LUXEMBOURG | PARIS, FRANCE

This morning, disembark the ship in Bernkastel.

Excursion: Luxembourg Holiday

Markets. Each year in December, Luxembourg's Place d'Armes transforms into a traditional holiday market. Stroll through the square and perhaps indulge in local specialties.

Continue to Paris by TGV train and check in to the Paris Marriott Opera Ambassador Hotel.

DAY TEN

B

PARIS

Independent Exploration: Spend the day pursuing individual interests.

DAY ELEVEN

B

PARIS

Independent Exploration: Spend the morning at leisure.

Excursion: Seine River Cruise. This afternoon, enjoy some of Paris' most iconic sights, including the Grand Palace and Notre Dame Cathedral, from the Seine and see many of the magnificent bridges that span the river. Tonight, join your fellow travelers for a Farewell Reception.

DAY TWELVE

B

After breakfast, transfer[✈] to the Paris airport for the return flight to your gateway city.

Note: Itinerary schedule may change due to local conditions. Many excursions in the program involve an element of walking. As this program takes place in late fall, AHI recommends dressing warmly.

Included meals indicated each day as
B | L | D = Breakfast/Lunch/Dinner.

| ACCOMMODATIONS |



MS AMADEUS SILVER

The state-of-the-art MS Amadeus Silver debuted in 2013 as a flagship of the innovative Lüftner cruise line. This stylish ship offers the utmost in service, safety and comfort. Step into the elegant reception area and immerse yourself in the ambience of a high-end hotel. Relax on the sun deck, indulge in a soothing massage, browse in the boutique or connect with friends at the Internet station. If you wish to be more active, practice your golf game on the putting green or exercise in the fitness room. Savor international cuisine at the restaurant's delicious breakfast and lunch buffets, and enjoy regional specialties at dinner. At the end of each day, return to the comforts of your cabin, appointed in bright, modern décor and featuring a river view, a satellite TV and a private bathroom with shower.



AHI EXCLUSIVE RIVER CRUISE EXTRAS

All AHI River Cruises feature:

- A first-class river cruise ship providing all outward-facing accommodations; friendly, personalized service; limited capacity; and exclusively designed sailing itineraries.
- Delicious dining aboard the ship featuring special extras such as morning coffee, wine with dinner and expertly prepared culinary specialties of the region.
- Expert local guides leading thoughtfully designed excursions to enrich your experience of the area.



PARIS MARRIOTT OPERA AMBASSADOR HOTEL

The luxurious Paris Marriott Opera Ambassador Hotel puts guests exactly where they want to be: in the heart of Paris. Convenient to the Louvre and other beloved attractions, including the Eiffel Tower, the hotel boasts well-appointed guest rooms and suites, each finished in 1920s art deco style. The hotel also offers a restaurant, a fitness center and complimentary Wi-Fi.

Reserve your trip to Holiday Markets, today!

Trip #: 1-21635W

Send to: The Association of Former Students
Attn: Traveling Aggies
505 George Bush Drive
College Station, TX 77840-2918
Phone: 979-845-7514
Fax: 979-845-9263
Toll Free: 800-633-7514

Full Legal Name (exactly as it appears on passport)

Guest 1: _____
Title First Middle Last Date of Birth

Email: _____

Guest 2: _____
Title First Middle Last Date of Birth

Email: _____

Street Address: _____

City: _____

State: _____ ZIP: _____

Home: (_____) Cell: (_____)

Sharing room with _____ (Form sent separately)

Name(s) you would like on your name badge(s):

(1) _____ (2) _____
Class Year Class Year

**I/we authorize you to make my/our reservations as follows:
Land/Cruise Program and AHI FlexAir**

I/we reserve the Land Program and request the AHI FlexAir to Frankfurt, Germany, with a return from Paris, France, to depart from:

_____ Departure City

- Please contact me regarding air options.
 Please send me information on upgrading my flights.

Land/Cruise Only Program

- I/we will make my/our own air arrangements and transfers.
 Cabin Category Desired: 1st choice _____ 2nd choice _____
 I prefer single accommodations (supplement waived, limited availability).

Reservations are subject to availability and are processed on a first come, first served basis. Reservations are to be paid in full by Sept. 13, 2015 (75 days prior to departure). Reservations received after this date must be accompanied by payment in full. Final payment may be made by personal check, MasterCard, Visa or Discover. Make checks payable to AHI International.

AHI Travel has assumed all costs for the printing and distribution of this promotion. This program is exclusively arranged by AHI Travel, 8550 W. Bryn Mawr Ave., Suite 600, Chicago, IL 60631. No funds donated to The Association of Former Students or to Texas A&M University have been used in the production or mailing of this travel brochure; all such costs are covered by the tour supplier.

Enclosed is a deposit of _____ (\$600 per person required) to reserve _____ place(s).

- Accept my check made payable to **AHI International**.
 Charge my: MasterCard Visa Discover

Card # _____

Expires _____ / _____

(Signature as it appears on credit card)

Please note: Any payment to AHI International constitutes your acceptance of the terms and conditions set out herein, including but not limited to the cancellation terms.

NOT INCLUDED-Fees for passports and, if applicable, visas, entry/departure fees; personal gratuities; laundry and dry cleaning; excursions, wines, liquors, mineral waters and meals not included in this brochure under included features; travel insurance; all items of a strictly personal nature.

MOBILITY AND FITNESS TO TRAVEL-The right is retained to decline to accept or to retain any person as a member of this trip who, in the opinion of AHI Travel is unfit for travel or whose physical or mental condition may constitute a danger to themselves or to others on the trip, subject only to the requirement that the portion of the total amount paid which corresponds to the unused services and accommodations be refunded. Passengers requiring special assistance, including without limitation those who permanently or periodically use a wheelchair, must be accompanied by someone who is fit and able to assist them, and who will be totally responsible for providing all required assistance.

AIR TRANSPORTATION-The price of air transportation offered by AHI Travel is based on Advance Purchase Excursion fares. After tickets are issued, penalties up to 100% of the ticket price may be levied. If connecting flights are requested, special promotional fares may be used, in which case penalties of as much as 100% may be assessed by the airlines if reservations are changed or canceled after ticketing. After departure, if the reservations are changed, you will be charged the higher, all year Economy class fare. VARIATIONS TO THE GROUP ITINERARY MUST BE REQUESTED NO LATER THAN 60 DAYS PRIOR TO DEPARTURE. Passengers who choose to make their own airline reservations independently will be wholly responsible for any airline fees or penalties incurred as a result of program cancellation and/or change in travel dates, or airline schedule(s).

BAGGAGE-Baggage restrictions vary according to the airline policy and the class of service flown. Details will be provided with your pre-departure information. Baggage allowances are subject to change by the carrier without notice. Excess baggage charges for additional or oversized/overweight pieces are expensive and not included in your trip price; plan your wardrobe accordingly. Transport of baggage and personal effects is at the owner's risk throughout the travel program.

AUTHORITY TO USE IMAGES AND AUDIO RECORDINGS-On occasion, AHI Travel obtains, from its staff, or from trip participants, photographic or video images of passengers and trip activities. By participating in this travel program, you authorize AHI Travel, without providing compensation to you, or obtaining additional approvals from you, to include photographic and video recordings of you, as well as voice recordings included with any videos, in AHI Travel's sales, marketing, advertising, publicity and/or training activities.

RESPONSIBILITY-AHI Travel and the Sponsoring Association do not own or operate any entity which provides goods or services for this program, and act only as agents for the independent suppliers of travel conveyance, transport, accommodations or other services. All such persons or entities are independent contractors. As a result, AHI Travel and the Sponsoring Association are not liable for any negligence or willful act of any such person or entity or any third person. In addition and without limitation, AHI Travel and the Sponsoring Association are not responsible for any delays, delayed departure or arrival, missed carrier connections, loss, death, damage or injury to person or property or accident, mechanical defect, failure or negligence of any nature whatsoever caused in connection with any accommodations, transportation or other services or for any substitution of hotels or of common carrier equipment, with or without notice, or for any additional expenses occasioned thereby. Dates, Program Details and Tour costs, although given in good faith and based on tariffs, exchange rates and other information current at the time of printing, are subject to change at or before the time of departure. No revisions of the printed itinerary or its included features are anticipated; however, the right is reserved to make any changes, with or without notice, that might become necessary, with the mutual understanding that any additional expenses will be paid by the individual passenger. Baggage and personal effects are the sole responsibility of the owners at all times. If the entire program is canceled for any reason, participants shall have no claim other than for a full refund. By forwarding the deposit, the passenger certifies that he/she has no physical, mental or other condition of disability that would create a hazard for himself/herself or other passengers and accepts the terms of this contract set out herein and in more specific pre-departure passenger information. The airlines and other transportation companies concerned are not to be held responsible for any act, omission, or event, during the time passengers are not on board their conveyances. The passage contract in use, when issued, shall constitute the sole contract between the company(ies) and the passenger and/or purchaser of this trip.

CANCELLATION-In addition to airline cancellation penalties, all cancellations for any reason whatsoever will be subject to a \$250 per person administrative fee. (Please note that you may choose, at the time of cancellation, to apply the withheld administrative fee to a future AHI Travel program that will operate in the current calendar year or year following.) Cancellation from 120 days to 76 days prior to departure will result in forfeiture of 10% of the entire cost of the trip per person; 75-30 days, 50% of the trip cost per person; cancellation from 29 days up to the time of departure will result in 100% forfeiture of the entire cost of the trip. TRIP CANCELLATION INSURANCE IS AVAILABLE. AN APPLICATION WILL BE SENT AFTER YOU RESERVE. All cancellations must be submitted in writing to AHI International Corporation.

CST Registration No. 2028271-20. Fla. Seller of Travel Reg. No. ST-33300 Iowa Seller of Travel No. 520 Ohio Seller of Travel Reg. No. 8889139. Washington State Seller of Travel Reg. No. 601-820-871. PARTICIPATING AIRLINES-all IATA and ARC Member Carriers ©2015 AHI Travel Printed in the USA.

LAND | CRUISE PROGRAM

Nov. 28-Dec. 8, 2015

Category-Deck	Full Price	Special Savings	Special Price*
E-Haydn (Aft)	\$3,145	\$250	\$2,895*
D-Haydn (Forward)	\$3,345	\$250	\$3,095*
C-Strauss (Aft)	\$3,745	\$250	\$3,495*
B-Strauss (Forward)	\$3,845	\$250	\$3,595*
A-Mozart	\$4,045	\$250	\$3,795*
Suite	\$4,545	\$250	\$4,295*

All cabins feature a balcony.

*Special Price valid if booked by the date found on the address panel.

VAT is an additional \$395 per person.

All prices quoted are in USD, per person, based on double occupancy and do not include air transportation costs (unless otherwise stated). **Single supplement waived for solo travelers!** This offer is limited, capacity controlled and tends to sell out quickly.

AHI FLEXAIR

Nov. 27-Dec. 8, 2015

Our personalized air program allows you to select your flights, routing, class of service and dates of travel in consultation with one of our experienced Passenger Service Representatives. Airfares will vary, depending on airline, routing and class of service. In most cases, transfers between the airport and hotel/cruise ship will be included on arrival and departure days. Your Passenger Service Representative will provide you with all of the details you need to guarantee your transfer. Book your air with us to ensure assistance in the case of schedule changes or delays that may impact your air travel plans.

ITINERARY

- Day 1** Depart Gateway City[†]
- Day 2** Frankfurt, Germany | Kehl
- Day 3** Kehl | Strasbourg, France
- Day 4** Speyer | Heidelberg | Worms
- Day 5** Worms | Rudesheim
- Day 6** Koblenz
- Day 7** Cochem
- Day 8** Bernkastel | Trier
- Day 9** Luxembourg | Paris, France
- Day 10** Paris
- Day 11** Paris
- Day 12** Return to your gateway city.[†]

NOTE: This itinerary schedule may change due to local conditions. Many excursions in this program involve an element of walking.

[†]Provided only for AHI FlexAir passengers.



The magical atmosphere of the holiday market in Trier

800-633-7514

AggieNetwork.com/Travel

| INCLUDED FEATURES |

Accommodations

- **Seven nights** aboard the first-class **MS Amadeus Silver**. Embark from Kehl, Germany, and port in Speyer, Worms, Rudesheim, Koblenz, Cochem and Bernkastel.
- **Three nights in Paris, France**, at the deluxe **Paris Marriott Opera Ambassador Hotel**.

Transfers and Portage

- All boat rides, train and deluxe motor coach transfers in the Land/Cruise Program itinerary and baggage handling on these transfers are included.

Meals

- Enjoy an **extensive meal program**, featuring 10 breakfasts, six lunches and seven dinners; tea or coffee with all meals, plus wine with dinner.
- Take advantage of leisure time to try the local cuisine independently.
- Attend **Welcome and Farewell Receptions and Dinners**.

Your Exciting Travel Program

(For details, see the day-by-day itinerary.)

- **Informative educational programs** presented by local experts will enhance your insight into the region.
- **All excursions** as outlined in your program itinerary:
 - Tour Strasbourg and its historic city center.
 - Explore Heidelberg and stroll its renowned Hauptstrasse.
 - Learn about the varied history of Worms.
 - Walk the winding lanes of Koblenz.
 - Visit the baroque town hall in Cochem and see its imposing castle.
 - See the Roman ruins of Trier and walk through ancient Bernkastel.
 - Discover the square and holiday markets of Luxembourg.
 - Cruise the Seine River in Paris.

Many Included Extras

- **Personal VOX listening device** to hear every word from your expert English-speaking guides.
- Consultation services of a dedicated **Passenger Service Representative** prior to departure.
- Services of an experienced **Travel Director** throughout your stay.
- **Tipping** of excursion guides and drivers.
- Detailed travel and destination information to assist in planning.
- Complimentary travel wallet.

| OPTIONAL EXCURSION |

A Day at Versailles

On **Day Ten**, instead of having a day at leisure, travel by train to explore France's grandest palace, including the Hall of Mirrors where the Treaty of Versailles was signed. Just a short trip outside of Paris, the baroque chateau was the kingdom's political capital and the seat of the royal court from 1682 until 1789. A headset rental is included so you can explore at your own pace.

NOTE: This excursion is available at an additional cost.



Presorted Std.
U.S. Postage
Paid
AHI Travel



Counterclockwise from top:

*Paris holiday market
Holiday market, Heidelberg
Seasonal pastry
Enjoying traditional glühwein*

Cover photo:

Bustling holiday market in the heart of Trier



A word about your Tour Operator

AHI Travel is the premier operator of deluxe travel programs sponsored by alumni associations. Their experienced, professional staff has offered the highest level of service in **innovative travel programs since 1962.**

In AHI Travel's care, you can rely on:

- **An exceptional travel value.** It would be impossible for an independent traveler to arrange all these unique experiences, inclusions and services at a comparable price.
- **Unique access to local sites.** Take advantage of more than 50 years of travel experience to gain preferred entrance to popular sites and to uncover the region's hidden treasures.
- **Experienced Travel Directors** who attend to every detail of your journey.
- **Expertise of local guides** who possess authoritative knowledge of the region and offer personal insight into local culture.
- **Flexibility and customization.** Free time during the trip allows you to pursue your own interests. They will also help you tailor your dream trip with add-ons and extensions.
- **Safety and security.** In a country where you might not know the language or culture, their professional staff is on hand to ease your way and get you any help you need.



Like us at [facebook.com/ahitravel](https://www.facebook.com/ahitravel)



Follow us on Twitter @ahitravel



Follow us on Instagram @ahitravel

*The Association of Former Students
Attn: Traveling Aggies
505 George Bush Drive
College Station, TX 77840-2918*

MKTRHINE15 37

**Please call or refer to our
website for the most current
program information,
discounts and pricing.**